

# MONTHLY MEMBERSHIP PROGRESS REPORT

District 325 J

Results as of: 4/30/2026

GMT:

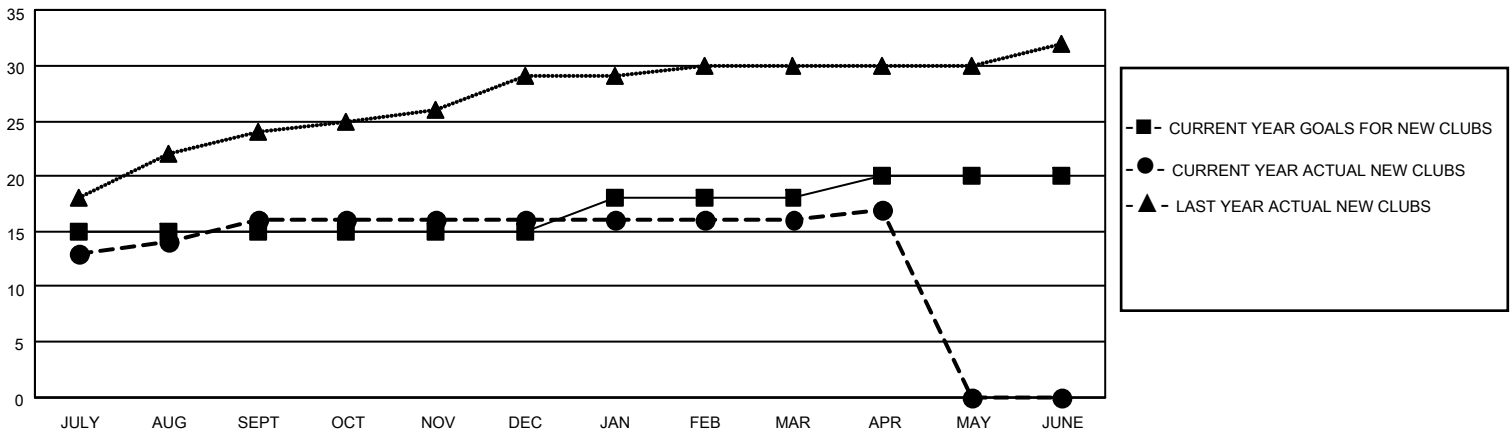
LOCATION NEPAL

GMT CA

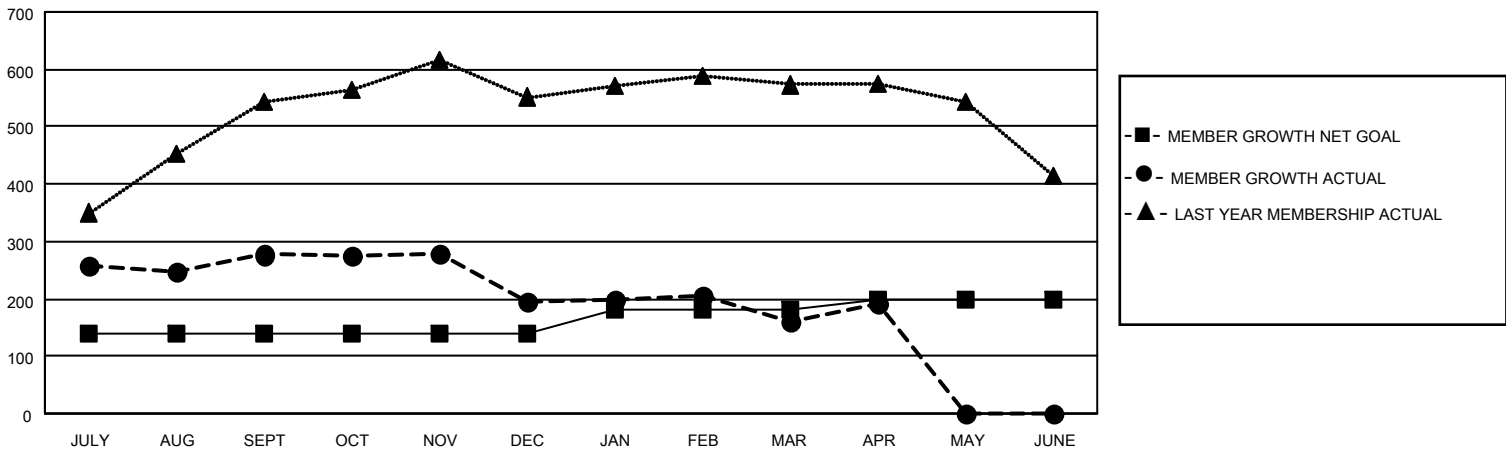
| Clubs                 |               |           |               |
|-----------------------|---------------|-----------|---------------|
| RESULTS FOR 2025-2026 |               |           |               |
| QUARTER               | NEW CLUB GOAL | NEW CLUBS | DROPPED CLUBS |
| JULY/AUG/SEPT         | 15            | 16        | 4             |
| OCT/NOV/DEC           | 0             | 0         | 0             |
| JAN/FEB/MAR           | 3             | 0         | 0             |
| APR/MAY/JUNE          | 2             | 1         | 0             |

| Members               |                        |                      |  |
|-----------------------|------------------------|----------------------|--|
| RESULTS FOR 2025-2026 |                        |                      |  |
| QUARTER               | MEMBER GROWTH NET GOAL | MEMBER GROWTH ACTUAL | DROPPED MEMBERS ACTUAL (including transfers) |
| JULY/AUG/SEPT         | 140                    | 424                  | 126  |
| OCT/NOV/DEC           | 0                      | 112                  | 174  |
| JAN/FEB/MAR           | 40                     | 64                   | 95   |
| APR/MAY/JUNE          | 20                     | 46                   | 11   |

GOALS AND ACTUAL NEW CLUBS CUMULATIVE



GOALS AND ACTUAL MEMBERS CUMULATIVE



|                         |   |  |                       |
|-------------------------|---|--|-----------------------|
| <b>DROPPED CLUBS: 4</b> | 69 CLUBS OF 150 ADDED 1 OR MORE NEW MEMBERS | <b>GENDER DISTRIBUTION</b>                       |                       |
|                         |   | MALE 2,199 (68.27%)                              | FEMALE 1,020 (31.67%) |
| <b>DROPPED MEMBERS</b>  |   | <b>CLICK HERE FOR CUMULATIVE MEMBERSHIP DATA</b> |                       |
| DECEASED 0              | TOTAL FAMILY UNIT MEMBERS 1,943             | TOTAL FAMILY UNIT MEMBERS 1,943                  |                       |
| CLUB CANCELLED 32       |   | FAMILY MEMBERS PAYING HALF DUES 1,302            |                       |
| OTHER 372               |   |  |                       |
| <b>TOTAL 404</b>        |   |  |                       |